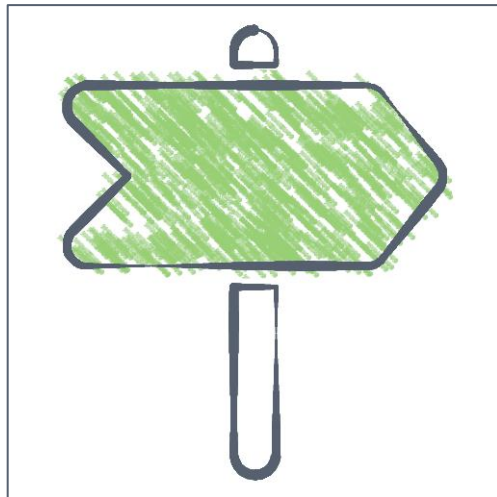


# Spaghetti Diagram... at a glance

### What?



A spaghetti diagram is a visual representation of the physical flow of materials and people through the activities of a process.

They expose inefficient layouts and identify large distances travelled between key steps.

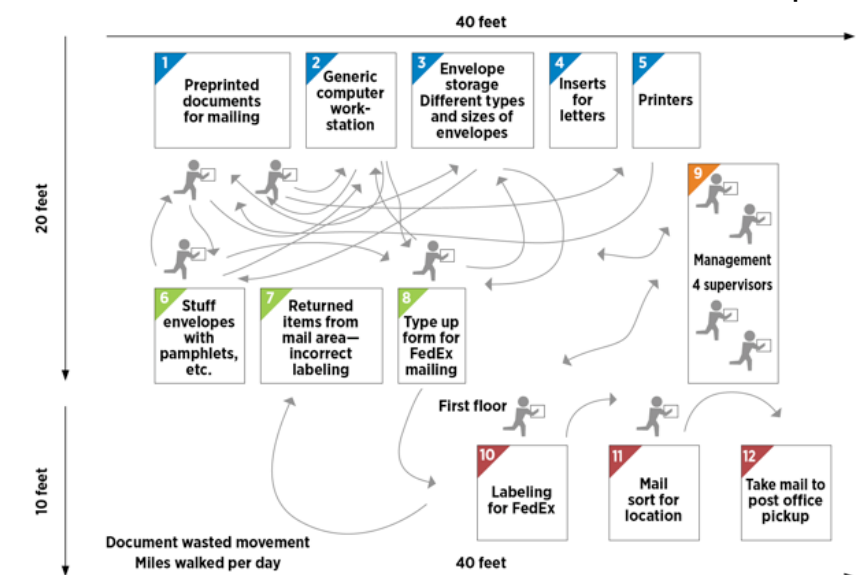
### How?



Spaghetti diagrams are prepared as a scaled map of a workspace or floorplan. The procedure for drawing spaghetti diagrams requires the user to observe the workflow, identify work points and use connecting lines to show the process flow.

- Outline the present work area procedure in detail
- Describe the movement each unit or person makes by drawing a line from one point to another
- As more movements are made, more lines are drawn
- Redundant/wasteful movements are indicated by the increasing number of lines on the work area.

Example Spaghetti Diagram for a Mail room, which shows the movement of staff between each process.



### Why?



Spaghetti diagrams can be used to visually identify wastes in a department or process brought about by unnecessary movements and paths. They provide a good way of representing the movement of goods through a process, or the movement of a document through a particular department. The impression the image a spaghetti diagram creates is often stronger than what can be portrayed using data alone.

Want to learn more?

Spaghetti Diagram v1.0



<https://www.youtube.com/watch?v=ol3i-GiWAM0>





# Spaghetti Diagram... continued

## When would I use it?

To improve efficiency at the workplace or in production processes for example, the spaghetti diagram can be used by the analyst to design strategies for minimising starts and stops as well as waits and distances.

You may want to think about the following when reviewing a process:

- Can time-wasting movements be eliminated?
- Can tasks be executed in a different and more effective sequence than are currently being done?
- Can different machines, people or equipment be arranged closer together to reduce walking distances?
- How can processes be simplified considering the observations?

## What do I do next:

To improve efficiency in the workplace or in production processes, the spaghetti diagram can be used to design strategies for minimising starts and stops as well as waits and distances.

Example of office space:

